

## **BOMBAS DAVID BROWN GUINARD UNION PUMPS**

### **I. PRESENTACIÓN DE DAVID BROWN GUINARD UNION PUMPS**



IPIC GSP S.L. representa en exclusiva para España al grupo DAVID BROWN GUINARD UNION PUMPS (Grupo TEXTRON), desde el 1 de Octubre de 2.005.

**DB GUINARD UNION PUMPS** está especializado en el diseño y fabricación de bombas API 610 de gran potencia, paquetes y reparaciones, para las industrias química, nuclear, del petróleo, de gas, de agua y petroquímica. Podemos ser su suministrador de todas sus necesidades de bombas, ya sean **centrífugas, alternativas, de vapor, de energía, o de engranajes.**

DAVID BROWN UNION PUMPS CO. es parte del grupo **Textron Fluid and Power**, al cual pertenecen las más reconocidas marcas de la industria de la bomba a nivel mundial:

- David Brown Union Pumps
- David Brown Guinard Pumps SAS
- David Brown Pumps
- Maag Pump Systems

II. RESUMEN DEL RANGO DE BOMBAS DE DB GUINARD UNION PUMPS:  
CLASIFICACIÓN DE BOMBAS API

**BB1**

HORIZONTAL PUMPS - BETWEEN BEARING – DOUBLE VOLUTE - 1 or 2 STAGES - CENTERLINE, AXIALLY SPLIT PUMPS  
DVDS, DVSS & DB30 SINGLE & 2 STAGE

**BB2**

HORIZONTAL PUMPS - BETWEEN BEARING - SINGLE OR DOUBLE STAGE PUMPS - CENTERLINE, RADIALY SPLIT PUMPS.  
DB21 DB22, KSMK

**BB3**

HORIZONTAL PUMPS - BETWEEN BEARING -MULTI STAGE - CENTERLINE, AXIALLY SPLIT PUMPS  
DB34, DVMX & M CLASS

**BB5**

HORIZONTAL PUMPS - BETWEEN BEARING - MULTI STAGE - BARREL PUMPS  
HMBS & DB36 DIFFUSER & VOLUTE

**VS1&VS6**

VERTICAL MULTI STAGES PUMPS ( with or without suction can) MULTI STAGE  
VMX, VX & VLX

### III. RANGO DE BOMBAS APLI 610 “HEAVY DUTY”

#### 1. BOMBAS DE PROCESO HORIZONTALES (Horizontal Process Pumps):

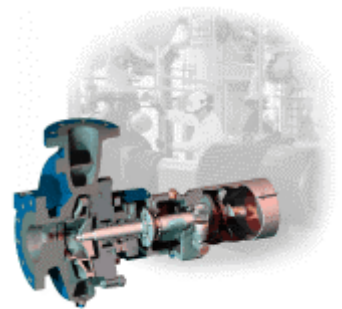
- **Bombas de proceso horizontales de una etapa** (Single Stage)
- **Bombas de proceso horizontales entre cojinetes** (Between Bearing Pumps)
- **Bombas de proceso horizontales multietapa** (Multi Stage)

##### 1.1. Bombas de proceso horizontales de una etapa (Single Stage)

###### HHS PUMPS

API 610 type OH2 for petrochemical and hydrocarbon processing, transfer, charge and hot services.

Capacities to	11,000 US gpm	2,500 m <sup>3</sup> /hr
Heads to	1,310 feet	400 metres
Maximum Temperature	800°F	427°C
Maximum Working Pressure	1,000 psi	75 bar

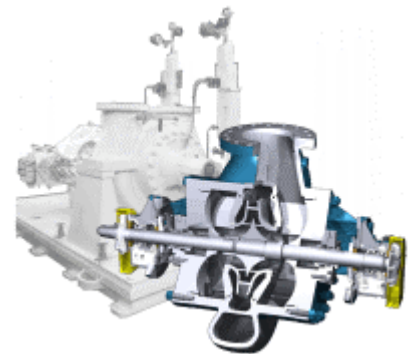


##### 1.2. Bombas de proceso horizontales entre cojinetes (Between Bearing Pumps)

###### DB21, KSMK & HOL SINGLE STAGE PUMPS

API 610 type BB2 for, heavy duty, booster, pipeline, transfer, charge and hot bottoms applications.

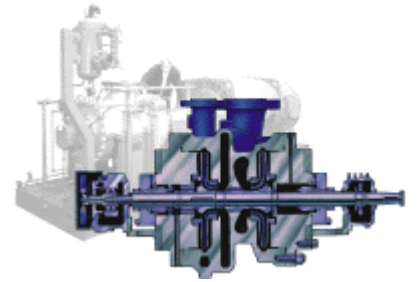
Capacities to	11,000 US gpm	2,500 m <sup>3</sup> /hr
Heads to	1,650 feet	500 metres
Maximum Temperature	800°F	427°C
Maximum Working Pressure	725 psi	50 bar



###### DB22 & KSMK TWO STAGE PUMPS

API 610 type BB2 for high pressure and high temperature services in hydrocarbon processing, oil and gas duties.

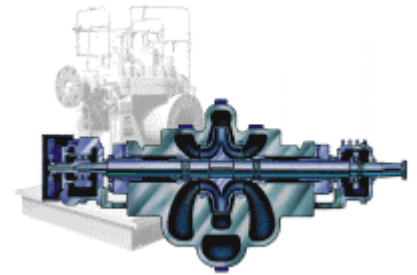
Capacities to	6,600 US gpm	1,500 m <sup>3</sup> /hr
Heads to	2,300 feet	700 metres
Maximum Temperature	800°F	427°C
Maximum Working Pressure	725 psi	50 bar



**DVDS, DVSS & DB30 SINGLE & 2 STAGE**

API 610 type BB1 For pipeline, booster, off sites and transfer services.

Capacities to	6,600 US gpm	1,500 m <sup>3</sup> /hr
Heads to	2,700 feet	820 metres
Maximum Temperature	400°F	205°C
Maximum Working Pressure	2,300 psi	160 bar
Maximum Speed	6,000 rpm	



### 1.3. Bombas de proceso horizontales multietapa (Multi Stage)

#### DB34, DVMX & M CLASS MULTI-STAGE

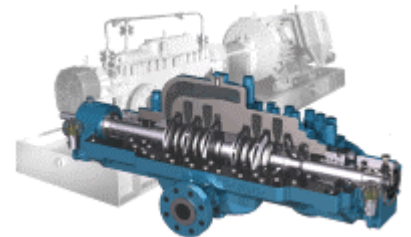
API 610 type BB3 for pipeline, water injection, boiler feed, descaling, reverse osmosis and other high pressure duties.

#### PDF Brochures

[DB34, DVMX, M A4](#)

[DB34, DVMX, M US](#)

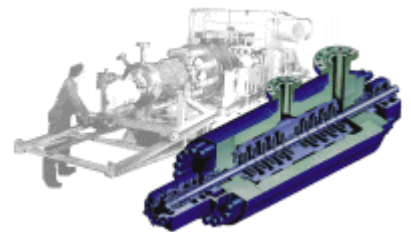
Capacities to	9,700 US gpm	2,200 m <sup>3</sup> /hr
Heads to	9,200 feet	2,800 metres
Maximum Temperature	400°F	205°C
Maximum Working Pressure	4,350 psi	300 bar
Maximum Speed	6,200 rpm	



#### HMBS & DB36 DIFFUSER & VOLUTE BARREL PUMPS

API 610 type BB5 for very high pressure water injections, and boiler feed duties plus, high Temperature charge, bottoms, and transfer services.

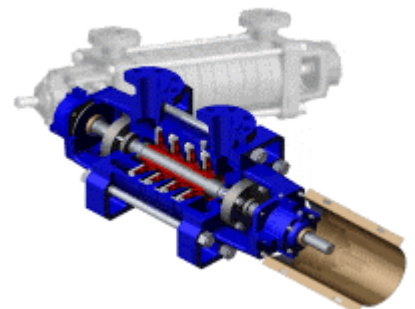
Capacities to	11,000 US gpm	3,200 m <sup>3</sup> /hr
Heads to	9,200 feet	2,800 metres
Maximum Temperature	800°F	427°C
Maximum Working Pressure	5,800 psi	450 bar
Maximum Speed	6,200 rpm	



#### RPD DIFFUSER RING SECTION PUMP

Segmental Ring Pump for boiler feed, reverse osmosis, co-generation, descaling and other high pressure general duties.

Capacities to	1,500 US gpm	360 m <sup>3</sup> /hr
Heads to	2,950 feet	900 metres
Maximum Temperature	400°F	205°C
Maximum Working Pressure	1,450 psi	100 bar



## 2. BOMBAS DE PROCESO VERTICALES (Vertical Process Pumps):

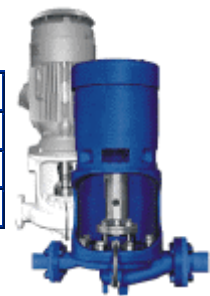
- Bombas de proceso verticales en línea (Inline)
- Bombas de proceso verticales multi-etapa (Multistage)

### 2.1. Bombas de proceso verticales en línea (Inline)

#### VCM/UNI-CHEM INLINE PUMPS

ASME/ANSI type B73.2 used in chemical transfer, process and general circulation duties.

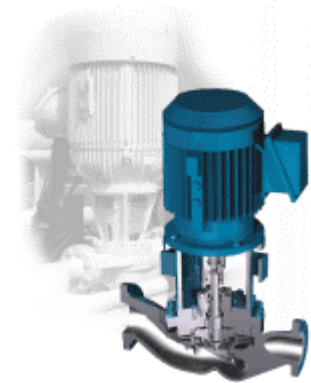
Capacities to	1,800 US gpm	400 m <sup>3</sup> /hr
Heads to	500 feet	152 metres
Maximum Temperature	500°F	260°C
Maximum Working Pressure	275 psi	19 bar



#### VLK/UNILIGN, VTK IN LINE PUMPS

API 610 type OH4 for transfer, booster, process and offsites.

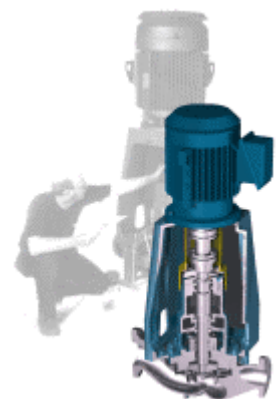
Capacities to	6,000 US gpm	1,360 m <sup>3</sup> /hr
Heads to	1,100 feet	330 metres
Maximum Temperature	800°F	427°C
Maximum Working Pressure	725 psi	50 bar



#### VLK-BB IN LINE PUMPS

API 610 type OH3 for transfer, process booster, and offsite Services.

Capacities to	5,000 US gpm	1,130 m <sup>3</sup> /hr
Heads to	1,000 feet	330 metres
Maximum Temperature	700°F	370°C
Maximum Working Pressure	465 psi	32 bar

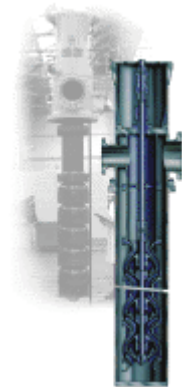


## 2.2. Bombas de proceso verticales multi-etapa (Multistage)

### V, VM & VX & DB50A MULTI STAGE PUMPS

API 610 types VS 1 & VS 2, for hydrocarbon and industrial sumps, transfer, reverse osmosis, lift pumps and fire pumps to NFPA 20.

Capacities to	31,000 US gpm	7,000 m <sup>3</sup> /hr
Heads to	3,900 feet	1,200 metres
Maximum Temperature	400°F	205°C
Maximum Working Pressure	580 psi	40 bar
Maximum Speed	6,000 rpm	



### VB, VMBX, & VBX PUMPS

API 610 type VS6 & VS7 for hydrocarbon and pipeline boosting, condensate, and other very low NPSH applications.

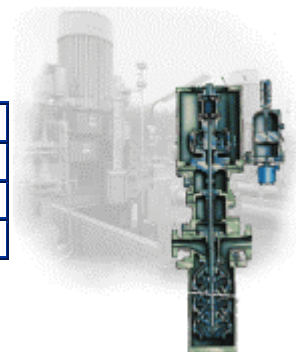
Capacities to	2,200 US gpm	500 m <sup>3</sup> /hr
Heads to	3,900 feet	1,200 metres
Maximum Temperature	400°F	205°C
Maximum Working Pressure	1,740 psi	120 bar



### DB62C CRYOGENIC MULTI-STAGE PUMPS

API 610 type VS6 & VS7 for LNG and other cryogenic services.

Capacities to	11,000 US gpm	2,500 m <sup>3</sup> /hr
Heads to	1,310 feet	400 metres
Maximum Temperature	-328°F	-200°C
Maximum Working Pressure	1,000 psi	75 bar





[www.ipic-gsp.com](http://www.ipic-gsp.com)



### MUTUP MULTIPHASE PUMP

Subsea, onshore and offshore for handling multiphase mixture such as gas, oil and water.

Capacities to	100,000 bpd	
Pressures to	1,160 psi	80 bar

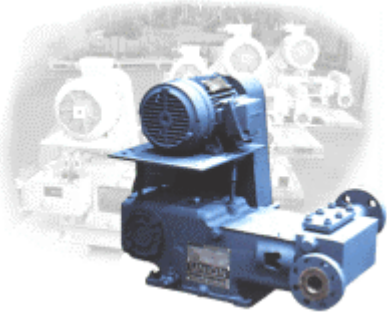


### 3. BOMBAS DE ENERGÍA (Power pumps):

#### SX-3, DX-5, TX-10 & TX28

Simplex, duplex and triplex single acting plunger pumps for general industrial and process services. Also available to API 674.

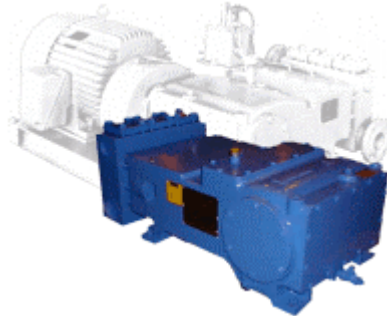
Capacities to	40 US gpm	9 m <sup>3</sup> /hr
Pressures to	10,000 psi	690 bar
Temperature Range	-100°F to 360°F	-73°C to 180°C
Maximum Continuous Powers to	23.5 hp	17.5 kW



#### TD-30, TD-60 & QD-100

Triplex and quintuplex single acting plunger pumps for general and process services. Also available to API 674.

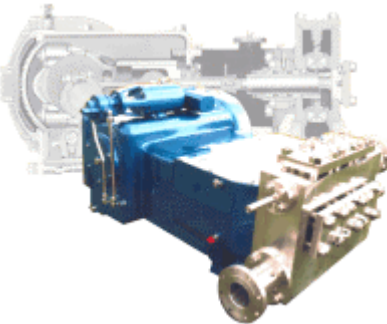
Capacities to	121 US gpm	27.5 m <sup>3</sup> /hr
Pressures to	10,000 psi	690 bar
Temperature Range	-100°F to 360°F	-73°C to 180°C
Maximum Continuous Powers to	82.6 hp	61.6 kW



#### TX-50 THROUGH TX-200 & QX-300

Internally geared triplex and quintuplex single acting plunger pumps for general and process services. Also available to API 674.

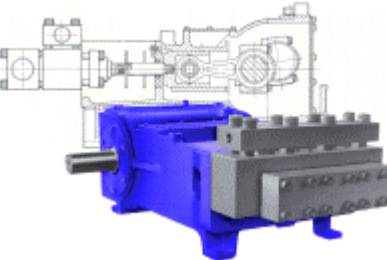
Capacities to	624 US gpm	141.8 m <sup>3</sup> /hr
Pressures to	7,500 psi	517 bar
Temperature Range	-100°F to 360°F	-73°C to 180°C
Maximum Continuous Powers to	322 hp	240 kW



#### TD-120, TD-150, TD-240, QD-200, QD-400 & QD-5240

Triplex and quintuplex single acting plunger pumps for general industrial and process duty. Also available to API 674.

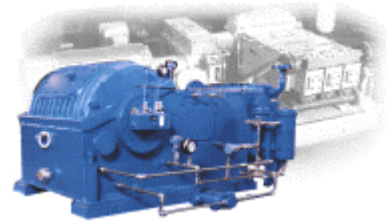
Capacities to	644 US gpm	146.3 m <sup>3</sup> /hr
Pressures to	20,000 psi	1,750 bar
Temperature Range	-100°F to 360°F	-73°C to 180°C
Maximum Continuous Powers to	435 hp	324.4 kW



**TD/QD-7000 & TD/QD-8060**

Triplex and quintuplex single acting plunger pumps for general industrial and process duty. Also available to API 674.

Capacities to	977 US gpm	222 m <sup>3</sup> /hr
Pressures to	20,000 psi	1,750 bar
Temperature Range	-100°F to 360°F	-73°C to 180°C
Maximum Continuous Powers to	1,415 hp	1,055 kW

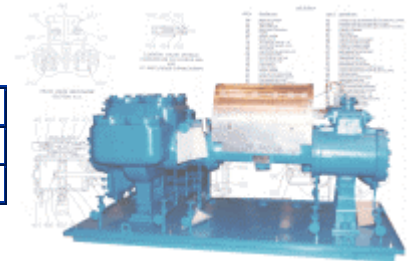


**4. BOMBAS ALTERNATIVAS DE VAPOR, ACCIÓN DIRECTA  
(Reciprocating Steam Pumps, Direct Acting)**

**DVP & SMC VALVE POT PISTON PUMPS**

The DVP is a double acting duplex piston pump whilst the SMC is simplex version. The units are used on high temperature applications, slurries, viscous or volatile liquids.

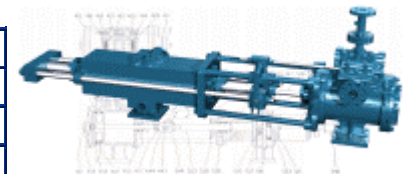
Capacities to	525 US gpm	119 m <sup>3</sup> /hr
Pressures to	600 psi	42 bar
Temperature range	-100 to 800 °F	-73 to 426 °C



**FHP PUMPS**

The FHP is a horizontal, simplex, double acting, outside end-packed plunger type design with a forged or plate liquid cylinder.

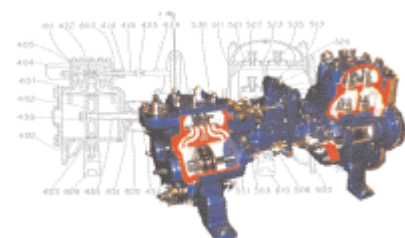
Capacities to	58 US gpm	13.2 m <sup>3</sup> /hr
Pressures to	10,000 psi	690 bar
Standard Temperature range	-100 to 350 °F	-73 to 177 °C
Special Temperature range	800 °F	426 °C



**DHD DIRECT ACTING DUPLEX PUMPS**


Double acting duplex piston pump widely used with steam, gas or air drive on boiler feed and refinery process duties.

Capacities to	1,000 US gpm	227 m <sup>3</sup> /hr
Pressures to	350 psi	24 bar
Temperature range	-100 to 350 °F	-73 to 426 °C




## 5. BOMBAS DE ENGRANAJES (Gear Pumps)


### 5.1. INDUSTRIA QUÍMICA

process application	pump material	operating conditions	pump type	typical applications
	stainless steel	0–1000 mPas 0–150 °C 25 bar dp	CI	chemical processing food industry paints, coating
	stainless steel	0.3–4'000'000 mPas -30–320 °C 200 bar dp	CX / TX	pulp & paper industries pharmaceutical industry
	cast steel	0.3–4'000'000 mPas -30–320 °C 200 bar dp	RT / TX	petrochemical epoxy resins hot melt
	cast iron	0.3–4'000'000 mPas -30–320 °C 200 bar dp	NP	oil lubrication polyurethane
	stainless steel	magnetic coupling (hermetically sealed)	mag drive	


### 5.2. INDUSTRIA DEL POLÍMERO


process application	applications	differential pressure	pump type
	oligomer	< 9 bar	thermorex - RT
	prepolymer	< 120 bar	thermorex - RT
	transfer	< 120 bar	thermorex - RT
	recirculation	< 70 bar < 250 bar	viscorex vacorex / vacorex M
	extraction	< 70 bar < 250 bar	viscorex vacorex / vacorex M
	booster	< 250 bar	thermorex M
	metering	< 250 bar	thermorex M
	additive feed		cinox / terminox

### 5.3. INDUSTRIA DE COMPUESTOS

process application	applications	different pressure	pump type	typical applications
	compounding	< 350 bar	polyrex	polyolefins processing (primary compounding)

### 5.4. INDUSTRIA DE EXTRUSIÓN

process application	applications	differential pressure	pump type
	for bulk polymers and for regular process conditions	< 250 bar	extrex ST
	for slight- to medium-thermo sensitive polymers, and frequent product- and or color change	< 250 bar	extrex SP
	for shear- and temperature sensitive polymers	< 250 bar	extrex SE
	highest pressure application	< 450 bar	trudex
	for bulk polymers and for regular process conditions	< 250 bar	extrex classic

control systems for the extrusion industry	applications	controller type
	control system utmost easy of operation	maax 7
	control system for extruders automation	maax 20G
	control system for extruders system automation	maax 60

### 5.5. INDUSTRIA DEL CAUCHO

process application	applications	differential pressure	pump type
	elastomer processing	< 350 bar	rubbex